

INFRASTRUCTURE SOLUTIONS

基建解决方案



CONTENTS 目录

01 ABOUT GETO 企业介绍

Company Profile	P4-5	企业介绍
Development History	P6-7	发展历程
Production Strength	P8-9	生产实力
Industrial Digitization	P10-11	产业数字化
Integrated Product Solutions	P12	一站式产品解决方案
Whole-Chain Services	P13	全链条服务
Certifications	P14-15	资质认证

02 BRIDGE SOLUTIONS 桥梁解决方案

Temporary Road	P17	临时道路
Pile Cap	P18	承台施工
Pier	P19	墩柱施工
Bent Cap	P20	盖梁施工
Girder	P21-22	桥梁施工
Precast	P23	预制模具

03 TUNNEL SOLUTIONS 隧道解决方案

Arched Tunnel	P25	拱形隧道
Box Tunne	P25	箱型隧道
Circle Tunnel	P26	圆形隧道
Prefabricated Tunnel Components	P26	隧道预制构件

04 HYDRAULIC ENGINEERING SOLUTIONS 水利解决方案

Climbing Formwork For Dam	P28	大坝爬升模板
Slip Formwork For Shaft	P28	竖井滑模
Climbing Formwork For Shaft	P28	竖井爬模

05 PROJECT CASES 项目案例

P30

06 SERVICES 服务

P37

COMPANY PROFILE 企业介绍

GETO Group's Main Business: Green new building formwork and scaffolding, prefabricated buildings, modular housing, and related new energy solutions.

Green new building formwork and scaffolding includes: Aluminium formwork, steel formwork, steel-framed timber formwork, climbing systems, fair-faced concrete formwork, and infrastructure formwork and scaffolding products.

Prefabricated buildings include: Steel structures and precast concrete (PC).

Modular housing includes: Steel structures and precast concrete (PC).

New energy focuses on investment, EPC construction, and operation of commercial and industrial "Photovoltaics, Storage, and Charging" projects, while providing the "Green Energy Future Living" one-stop residential energy solution.

In 2021, GETO was listed on the ChiNext board of the Shenzhen Stock Exchange in China (Stock Code: SZ 300986). We have established 12 production bases globally and registered the "GETO®" international trademarks in 32 countries and regions, with products and services reaching worldwide markets.

志特集团主营：绿色新型建筑模架，装配式建筑，模块化房屋以及相关新能源。

绿色新型建筑模架包括：铝模，钢模，钢框木模，爬升式模架，清水混凝土模架，公基建类模架。

装配式建筑包括：钢结构、PC 两大类。

模块化房屋包括：钢结构、PC 两大类。

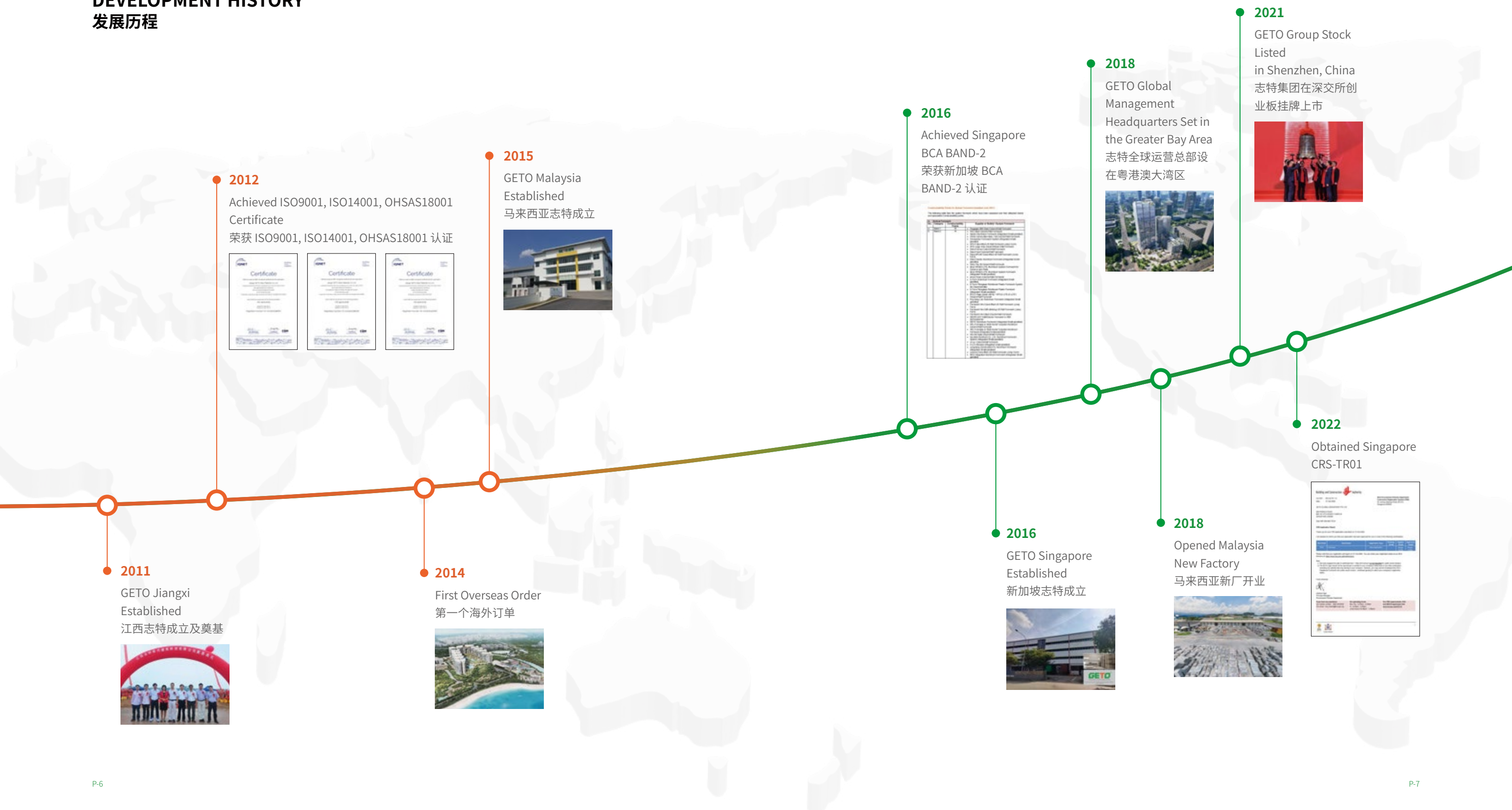
新能源包括：工商业“光、储、充”项目投资、EPC 建设、运维；“绿能未来居”一站式家庭能源解决方案。

“志特新材”于 2021 年在 A 股创业板挂牌上市（股票代码：SZ 300986），目前已在全球设立 12 大生产基地，在 32 个国家和地区注册了“GETO®”国际商标，产品和服务遍及全球。

ABOUT GETO 企业介绍

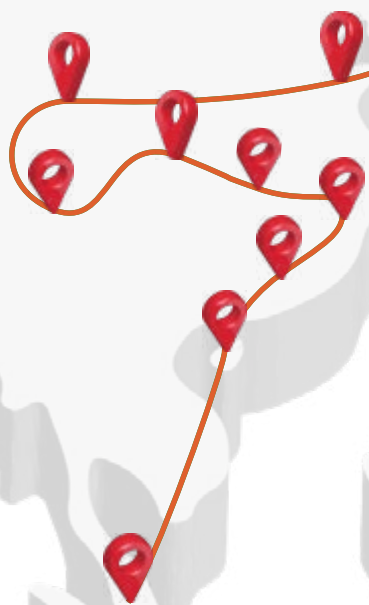


DEVELOPMENT HISTORY 发展历程



PRODUCTION STRENGTH 生产实力

ANNUAL PRODUCTION CAPACITY / 年产能：
5,000,000 m²



Jiangmen Factory
广东江门



Guangchang Factory I
江西广昌 I



Guangchang Factory II
江西广昌 II



Huizhou Factory
广东惠州



Weifang Factory
山东潍坊



VR FACTORY TOUR



Tongnan Factory
重庆潼南



Dingxi Factory
甘肃定西



Lingao Factory
海南临高



Xianning Factory
湖北咸宁



Nilai Factory, Malaysia
马来西亚森美兰州



Singapore Factory
新加坡工厂



Saudi Arabia Factory
沙特工厂



INDUSTRIAL DIGITIZATION 产业数字化

GETO INTELLIGENT MANUFACTURING / 智能化制造

Intelligent manufacturing greatly enhances efficiency, including independent R&D of the existing formwork renovation production line, formwork automation production line, robot welding, and friction stir welding (FSW).

智能化制造极大提升了效率，包括自主研发模板改造生产线、模板自动化生产线、机器人焊接、搅拌摩擦焊接（FSW）等。



FRICTION STIR WELDING (FSW) / 搅拌摩擦焊



GETO AUTOMATIC PRODUCTION LINE / 自动化生产线



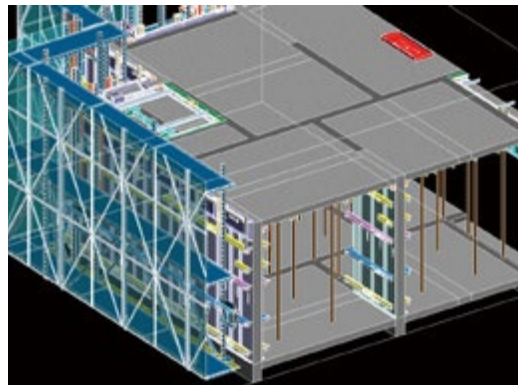
ROBOT WELDING / 机器人焊接

INDUSTRIAL DIGITIZATION 产业数字化

SELF-DEVELOPED SOFTWARE / 自主研发软件

GETO-BIM AUTOMATIC MODULATION SOFTWARE

This software enhances design efficiency and reduces errors, eliminating the need for factory preassembly and enabling faster on-site installation.

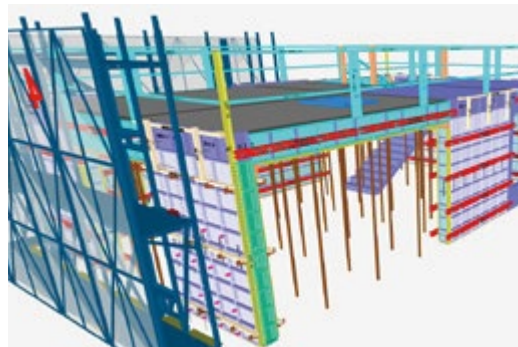


“工业化 BIM 设计”系统

产品设计“零缺陷”，精准高效，可免除工厂试组装环节，现场安装更快。

GETO 3D MODEL MEMORY OPTIMIZATION VISUALIZATION PLATFORM

The QR code on each panel helps locate materials quickly, enabling workers to assemble the formwork accurately on site.



3D 轻量化可视平台

每块模板上的 QR 码有助于快速定位，使工人能够在现场准确组装模板。

GETO-VR INSPECTION SOFTWARE

Enables remote virtual inspections, saving customers the need for factory or on-site acceptance.



“VR 虚拟远程验收”系统

实现远程虚拟检测，为客户节省工厂或现场验收的需要。

DIGITAL MANAGEMENT / 数字管理

GT-MS INFORMATION MANAGEMENT SYSTEM

Integrates sales, design, supply chain, engineering, and finance into a unified data management platform, enabling comprehensive data analysis and risk monitoring.

GT-MS 信息化管理系统

将销售、设计、供应链、工程、财务等多个业务板块整合为统一的数据管理平台，实现全面的数据分析和风险监控。



MATERIAL CODING SCAN MANAGEMENT SYSTEM

Utilizes PDA scanning for real-time warehouse material management based on BIM system outputs.

物资编码扫码管理系统

根据“BIM 设计”系统输出的 BOM，对物资进行统一编码，通过 PDA 快速扫码，实现实时仓储物资的查询和管理。



INTEGRATED PRODUCT SOLUTIONS

一站式产品解决方案

GETO offers one-stop package solutions for its product and service offerings. Products in GETO's one-stop package include the building formwork and scaffolding product series, prefabricated building product series, fair-faced concrete project series, photovoltaic new energy, and infrastructure formwork.

志特为其产品和服务提供一站式解决方案，产品包括：建筑模板及脚手架产品系列、装配式建筑产品系列、清水混凝土工程系列、光伏新能源、基础设施模板等。



WHOLE-CHAIN SERVICES

全链条服务

GETO's whole-chain service offerings include on-site assistance, logistics, design and consultation, monitoring and measuring services. Our service team is diverse, with staff from different ethnicities and languages.

志特提供全链条服务，包括现场工程协助、物流、设计和咨询、监测和测量服务。我们的服务团队多元化，员工来自不同的种族和语言。



CERTIFICATIONS 资质认证

GETO holds various certifications, ensuring compliance with international standards and reinforcing its commitment to quality and innovation.

志特拥有多项认证，确保符合国际标准，并加强对质量和创新的承诺。



Band 2 Certificate



BisSAFE Level 3 Certificate



CIDB G7 Certificate



ISO 14001



ISO 45001



ISO 9001



CIDB Reusable Formwork
System PPSi



CCCI Product Carbon Footprint
Verification Statement
CCCI 产品碳足迹核证声明



China Green Building Materials
Certification Certificate
中国绿色建材产品认证证书

BRIDGE SOLUTIONS 桥梁解决方案



TEMPORARY ROAD 临时道路

Temporary Steel Bridge 钢栈桥

Using steel pipe piles, beret beams, I-beams, bridge deck plates and protection components, the construction access is quickly built on rivers and beaches.

使用钢管桩、贝雷梁、工字钢、桥面板及防护组件，在河流、滩涂上快速搭建施工通道。



PILE CAP 承台施工

Steel Cofferdam 钢围堰

We provide prefabricated steel cofferdam, which can be shipped in containers and can be easily disassembled.

我们可以提供模块化装配式钢围堰，以便拆散装进集装箱运抵施工现场。



Bottomless Steel Box Cofferdam
无底钢套箱

Suitable for low pile cap and the cofferdam is inserted directly into the bottom of the riverbed.

适用于低桩承台，围堰直接插入河床底部。



Steel Box Cofferdam with Bottom
有底钢套箱

Suitable for high pile cap and the cofferdam is hanged on the pile foundation.

适用于高桩承台，围堰悬挂在桩基上。

PIER 墩柱施工

We can provide all kinds of formwork for pier construction, including steel formwork and climbing formwork.

对于墩柱施工，我们可以提供各类墩柱施工的模板，包括钢模板以及爬升模板。



Steel Formwork for Pier
墩柱钢模板

Suitable for low height pier and lifting equipment can be used.

适用于高度较低，可以使用吊装设备的墩柱。



Climbing Formwork for Pier
墩柱爬模

Suitable for high height piers.

适用于高度较高的墩柱。

BENT CAP

盖梁施工

We can provide steel formwork and operation platform for bent cap construction.
对于盖梁施工，我们可以提供盖梁钢模板以及盖梁施工操作平台。



Steel Formwork for Bent Cap
盖梁钢模板

Operation Platform for Bent Cap

盖梁施工平台

The modular operation platform can be lifted and installed and dismantled as a whole after the assembly is completed.

模块化的操作平台，组装完成后可整体的吊装安装和拆除，便于周转。



Bolt Clamp
抱箍

It can be used on circular pier to support the bent cap.
抱箍可以用在圆形墩柱上，作为盖梁的支撑。



GIRDER

桥梁施工

For bridge girder construction, there can be multiple solutions and corresponding products available, including simple supported beam , continuous beams, composite steel and concrete beams, and arch bridges.

对于各类桥梁施工，我们可以提供多种解决方案和对应产品，包括简支梁、连续梁、钢混组合梁、拱桥。

Simple Supported Beam(CIS) 简支梁施工（现浇）



Ringlock Scaffold
盘扣支架

Suitable for relatively flat terrain with a certain bearing capacity of the foundation.
适用于较平坦场地，地基有一定的承载力。



Beret Beam Support
贝雷梁支架

Suitable for bridges crossing roads, rivers where the support needs reserve passage holes.
适用于跨越道路、河流等情况的桥梁，支架需要预留通行孔。

Suspended Beam 悬臂梁



Heavy Duty Bracket
重型悬臂托架

Used for 0# segment of suspended beam.
用于悬臂梁 0# 节段现浇施工。



Balanced Cantilever Carriage
挂篮

Used for cantilever segment construction.
用于悬臂节段施工。

Arch Bridge 拱桥



Cantilever Carriage for Arch Bridge
拱桥挂篮

Used for reinforced concrete arch construction.
用于钢筋混凝土拱圈施工。



PRECAST 预制模具

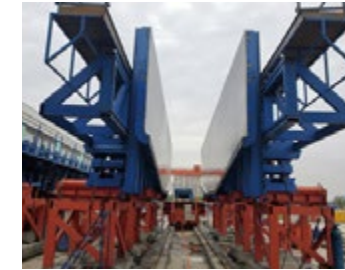
We can provide precast molds for prefabricated bridge components, including prefabricated pier, prefabricated bent cap, prefabricated box girders, prefabricated U-shaped girders, prefabricated T-beams, and prefabricated segmental assembly beams.

我们可以提供桥梁施工需要用到的预制模具，包含预制墩柱、预制盖梁、预制箱梁、预制 U 型梁、预制 T 梁、预制节段拼装梁。

Prefabricated Bridge Components 桥梁预制构件



Prefabricated Pier
预制墩柱



Prefabricated Bent Cap
预制盖梁



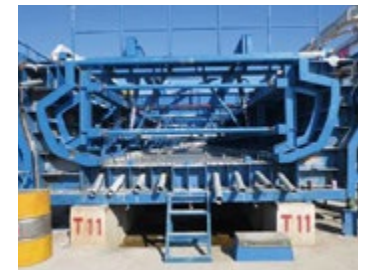
Prefabricated Box Girder
(Hydraulic)
预制箱梁 (液压)



Prefabricated Box Girder
预制箱梁



Prefabricated T-beam
预制 T 梁



Prefabricated U-beam
预制 U 梁



Prefabricated Segmental
Assembly Beams
预制节段拼装箱梁

TUNNEL SOLUTIONS 隧道解决方案

ARCHED TUNNEL 拱形隧道



Steel Formwork Tunnel Trolley
钢模体系隧道台车



Timber Formwork Tunnel Trolley
木模体系隧道台车

BOX TUNNEL 箱型隧道



Steel Formwork Pipe Gallery Tunnel Trolley
钢模体系管廊台车



Timber Formwork Pipe Gallery Tunnel Trolley
木模体系台车

CIRCLE TUNNEL 圆形隧道



Steel Formwork for Circle Tunnel
圆形隧道钢模板



Circle Tunnel Needle Beam Trolley
圆形隧道针梁式台车

PREFABRICATED TUNNEL COMPONENTS 隧道预制构件



Prefabricated Tunnel Segment Mold
预制管片模具



Prefabricated Box Tunnel Mold
预制箱型隧道模具

HYDRAULIC ENGINEERING
SOLUTIONS
水利解决方案

CLIMBING FORMWORK FOR DAM 大坝爬升模板



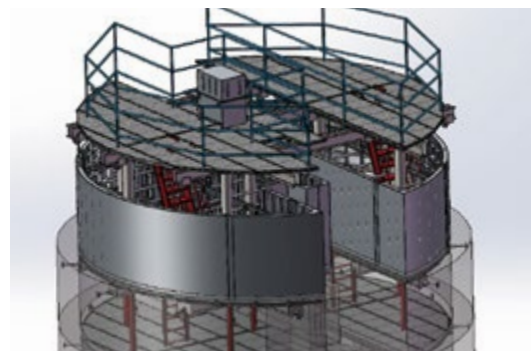
**Single-side Support
Climbing Formwork
for Dam**
单侧支撑大坝爬模

It can withstand concrete
pressure on one side.
可承受一侧的混凝土压力。

SLIP FORMWORK FOR SHAFT 竖井滑模



CLIMBING FORMWORK FOR SHAFT 竖井爬模



PROJECT CASES 项目案例



BATANG SARIBAS BRIDGE, MALAYSIA 马来西亚萨里巴斯大桥

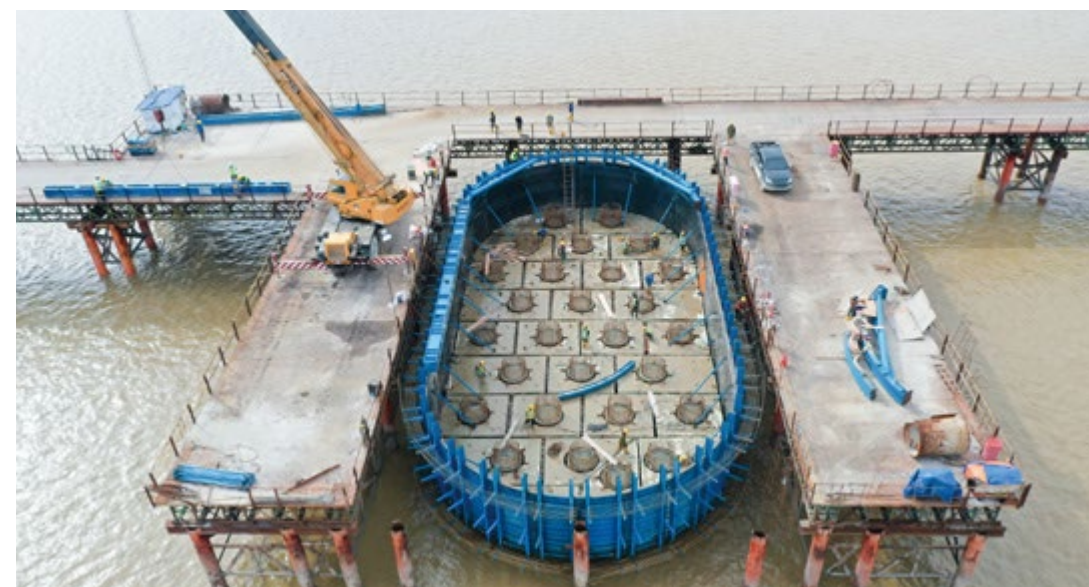


Located in Sarawak, Malaysia, the Batang Saribas Bridge Project has a total length of approximately 4693 meters and a total bridge length of 2390 meters, which is one of the longest bridges with the longest main span of its type in Southeast Asia. It has the characteristics of ultra-long pile foundation in water, large cap platform, high piers, and extra-large span.

萨里巴斯大桥项目位于马来西亚捞越。大桥线路全长约 4693m，桥长 2390 米，是东南亚地区同类型桥梁主跨跨径最长的桥梁之一。桥梁结构具有水中超长桩基、大承台、高墩、特大跨径等特点。

We provided comprehensive bridge solutions for this project, supplying customized steel formwork products including **cofferdam**, **bent cap**, **pier**, **T-beam**, **balanced cantilever bridge**, **apron panel**, **precast barrier**, etc. These reusable and cost-effective systems meet the project's dual demands for quality and efficiency, while our engineering support and service guarantees ensure seamless execution.

我们为该项目提供全面的桥梁解决方案，定制提供了**围堰、盖梁、墩柱、T梁、挂篮、裙板、预制护栏**等钢模产品，其具有周转率高、经济效益好的特点，能够满足项目对质量和效率的双重要求。同时，我们提供工程技术支持与服务保障。





ART SMART RAIL, MALAYSIA 马来西亚智能轨道快运系统



It is a significant project of the Sarawak State Government in Malaysia, serving as a critical pillar of the Kuching Urban Transportation System (KUTS). The first phase of the project encompasses 3 routes with 31 stations, spanning a total length of 70 kilometers. The majority of the infrastructure involves urban bridge works and incorporates multiple precast beam types.

The project features a vast variety and quantity of beam configurations. Each pier cap varies in length and exhibits diverse structural profiles.

该项目是马来西亚砂拉越州政府的重点项目，将成为古晋城市交通系统（KUTS）的关键支柱。项目第一阶段总长达 70 公里，涵盖 3 条路线、31 个车站，主要为城市桥梁，采用预制梁技术。项目中梁型种类繁多且体量大，每种盖梁梁长不一，造型变化多样。



✧ Modularizing the formwork and using fastener-type connections for flexible assembly, adapting to various beam types and addressing formwork usage challenges.

✧ Quality service and design support ensure efficient formwork turnover.

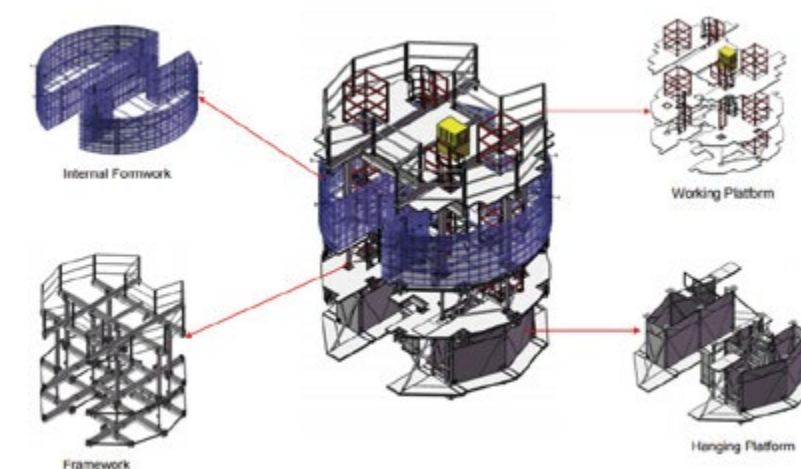
✧ 将模板化整为零，采用扣件式连接，灵活组合，适应各种梁型，有效解决梁型多样化带来的模板使用难题

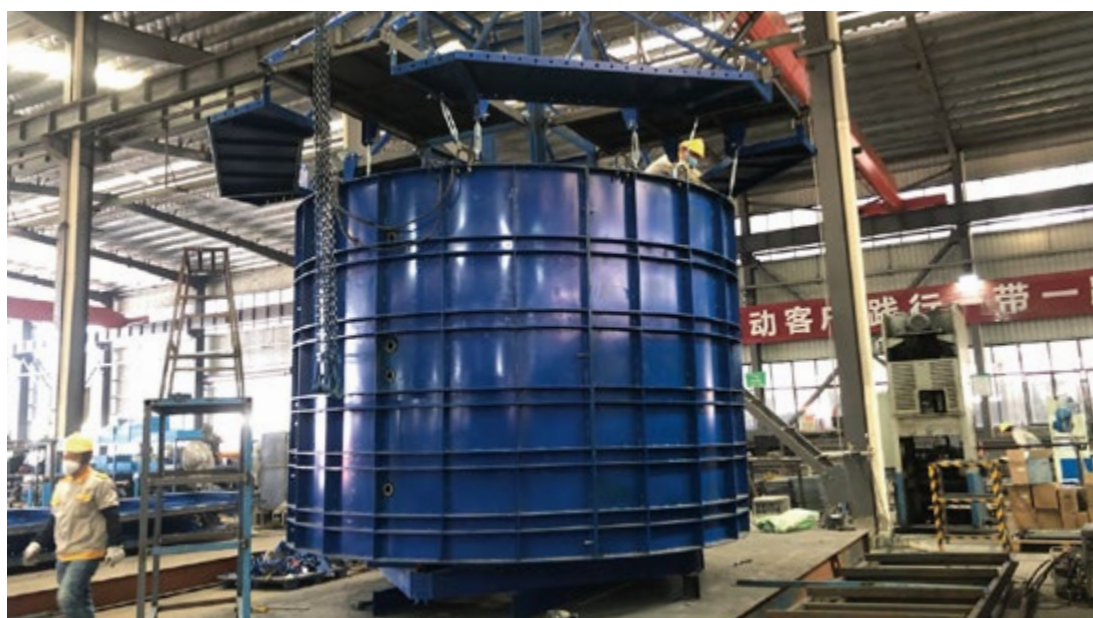
✧ 优质服务与设计支持，确保模板高效周转

TUNNEL SHAFT PROJECT, SINGAPORE 新加坡隧道竖井项目

The project contains a 50 km tunnel across the southern and western regions of Singapore. It is an important part of the local drainage integration system. GETO provided the shaft formwork system for this project help to solve the drainage problem.

该项目含 50 公里长的隧道，横跨新加坡南部和西部地区，是当地排水集成系统的重要组成部分。志特为此项目提供竖井模架系统，助力当地解决排水问题。





✘ This product has many advantages such as fast construction speed, high safety, high degree of mechanization, and labor saving.

✘ Each jacking operation only takes 2 to 3 hours.

✘ The steel platform of the top formwork system has large overall rigidity and large bearing capacity. The platform bearing capacity reaches 10 kN/m^2 .

✘ The measurement control points can be directly projected onto the steel platform for construction measurement convenience.

✘ 该产品具有施工速度快、安全性高、机械化程度高、节省劳动力等多项优点

✘ 每次顶升作业时仅为 2 ~ 3 个小时

✘ 顶模系统钢平台整体钢度大，承载力大，平台承载力达 10 kN/m^2

✘ 测量控制点可直接投测到钢平台上，施工测量方便

SERVICES 服务

Consultation 咨询



We provide consulting services for you before bidding and during the project process.

我们在投标前和项目过程中为您提供咨询服务。

Design and Analysis 设计和分析



We provide services for scheme design and computational analysis, including PE calculation.

我们提供方案设计和计算分析的服务，包括 PE 专业工程师计算。

Logistics 物流



We can deliver goods to project locations timely and safely.

我们可以及时和安全地将货物送到项目地点。

On-site Assistance 现场指导



We can arrange experienced technical personnel worldwide to solve problems on-site.

我们可以在全球范围内安排经验丰富的技术人员到现场解决问题。

GETO Group

Headquarters:

Greater Bay Area—No. 13 Heqing Road, Tsuihang New District, Zhongshan City, Guangdong Province

Southern China Production Base I :

Cuishan Lake Science and Technology Park, Kaiping, Jiangmen City ,Guangdong Province

Southern China Production Base II :

Huizhou Industrial Transfer Industrial Park, Huizhou City, Guangdong Province

Eastern China Production Base I :

Guangchang Industrial Park, Fuzhou City, Jiangxi Province

Central China Production Base:

Hi-tech Industry Development Zone, Xianning City, Hubei Province

Northern China Production Base:

China Aluminium Industrial Park, Linqu, Weifang City, Shandong Province

Southwest China Production Base:

Modern Manufacturing Industrial Park, Tongnan High-Tech District, Chongqing City

Northwest China Production Base:

The Circular Economy Park, Anding District, Dingxi City, Gansu Province

Hainan Production Base:

Gold Medal Port Industrial Park, Lingao County, Hainan Province

ASEAN Production Base:

Negeri Sembilan, Malaysia

Singapore Production Base :

West Region, Singapore

Saudi Arabia Production Base:

Riyadh, Saudi Arabia

Contact

Sales Hotline: 0086-760-88589004

E-mail: geto_market@geto.com.cn

Website: www.getoformwork.com

20250516V1

